



RECREATIONAL  
VEHICLES

# SPORTSMEN SE

TRAVEL TRAILERS & TOY HAULERS



Look no further than the Sportsmen SE if you are seeking an affordable RV with all the amenities of home. Sportsmen SE allows families to start creating memories together while keeping everyone happy!

## KEY FEATURES:

- Solid folding step
- Power tongue jack
- Large folding grab handle
- Window in entry doors
- Screen Defender in entry door



251RSSE | Gunmetal décor

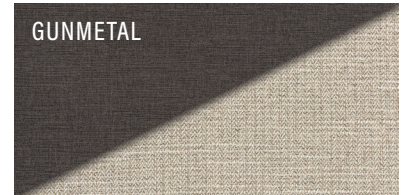
# 2023 SPORTSMEN SE

281BHSE | Gunmetal décor



2023  
DÉCOR

GUNMETAL



## TRAVEL TRAILERS

Sportsmen SE	221RESE	231BHKE	231FKKE	241RKSE	251RSSE	260BHSE	261BHKE	270BHSE	271BHKE	281BHSE
UVW (Unloaded Vehicle Weight)*	5,310	4,860	5,300	5,500	5,420	4,700	5,900	4,990	5,710	5,980
Dry Hitch Weight*	620	580	900	650	680	570	800	740	600	750
Dry Axle Weight*	4,690	4,280	4,400	4,850	4,740	4,130	5,100	5,110	5,230	5,380
CCC (Cargo Carrying Capacity)	1,690	1,140	1,700	1,500	1,580	2,300	1,100	2,010	1,290	2,020
GVWR	7,000	6,000	7,000	7,000	7,000	7,000	7,000	7,000	7,000	8,000
Interior Height	78"	78"	78"	78"	78"	78"	78"	78"	78"	78"
Exterior Height w/ A/C	10' 8"	10' 8"	10' 8"	10' 8"	10' 8"	10' 8"	10' 8"	10' 8"	10' 8"	10' 8"
Exterior Width	96"	96"	96"	96"	96"	96"	96"	96"	96"	96"
Exterior Length**	27' 2"	26' 5"	27' 5"	28' 2"	29' 7"	28' 7"	31' 7"	31' 5"	30' 11"	32' 7"
Refrigerator (cu. feet)	TBD	7	10	7	10	10	10	10	10	10
Water Heater Cap. (gal. G/E w/DSI)	6	6	6	6	6	6	6	6	6	6
Fresh Water Cap. (gal.)	45	45	45	45	45	45	45	45	45	45
Waste Water Cap. (gal.)	32	32	32	32	32	32	32	32	32	32
Gray Water Cap. (gal.)	32	32	64	64	32	32	32	32	32	32
LP Gas Cap. (lbs.)	40	40	40	40	40	40	40	40	40	40
Furnace BTUs (1,000s)	TBD	20	20	30	30	30	30	30	30	30
Tire Size	14"	14"	14"	14"	14"	14"	14"	14"	14"	15"
Awning	18'	18'	18'	19'	20'	14'	18'	16'	19'	20'

\*This weight reflects the rolling average unit weight for each model. Your trailer weight will vary according to optional equipment. \*\* Exterior length is measured from rear of bumper to leading edge of coupler.

# 2023 SPORTSMEN SE



Large "U" SHAPED DINETTE for more seating and sleep space. Available in most models.



10 CU FT 12V REFRIGERATOR w/Dual-Temperature Control.



LARGE FOLDING GRAB HANDLE.



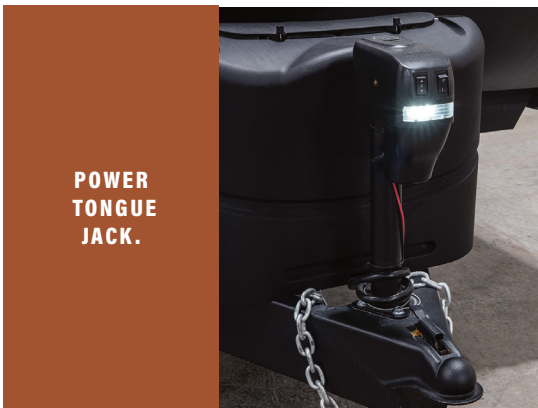
WINDOW in ENTRY DOORS.



3-BURNER COOKTOP.



Deep undermount STAINLESS STEEL SINK.



POWER TONGUE JACK.



SOLID FOLDING STEP and FRICTION HINGED ENTRY DOOR with SHADE PREP, SCREENSHOT and SCREEN DEFENDER.

## TRAVEL TRAILERS

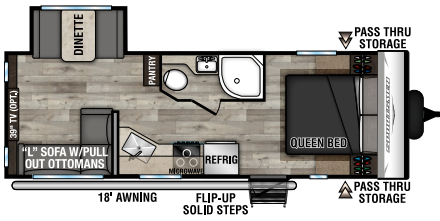
## TOY HAULERS

Sportsmen SE	301BHKE	301DBSE	303QBSE	312BHKE	332BHKE	250THSE	270THSE
UVW (Unloaded Vehicle Weight)*	6,200	6,150	7,550	7,110	7,390	5,300	5,400
Dry Hitch Weight*	820	880	890	840	930	770	1,000
Dry Axle Weight*	5,380	5,270	6,660	6,270	6,480	4,530	4,400
CCC (Cargo Carrying Capacity)	1,800	1,850	1,250	1,690	1,410	3,500	3,400
GVWR	8,000	8,000	8,800	8,800	8,800	8,800	8,800
Interior Height	78"	78"	78"	78"	78"	78"	78"
Exterior Height w/ A/C	10' 8"	10' 8"	11'	10' 10"	10' 10"	10' 8"	10' 8"
Exterior Width	96"	96"	96"	96"	96"	96"	96"
Exterior Length**	32' 10"	32' 10"	34' 7"	35' 9"	37' 3"	29' 1"	30' 10"
Refrigerator (cu. feet)	10	10	7	10	7	7	7
Water Heater Cap. (gal. G/E w/DSI)	6	6	6	6	6	6	6
Fresh Water Cap. (gal.)	45	45	45	45	45	45	45
Waste Water Cap. (gal.)	32	32	32	32	32	32	32
Gray Water Cap. (gal.)	32	32	32	32	32	32	32
LP Gas Cap. (lbs.)	40	40	40	40	40	40	40
Furnace BTUs (1,000s)	30	30	30	30	30	30	30
Tire Size	15"	15"	15"	15"	15"	15"	15"
Awning	16'	16'	12'	19'	20'	18'	20'

\*This weight reflects the rolling average unit weight for each model. Your trailer weight will vary according to optional equipment. \*\* Exterior length is measured from rear of bumper to leading edge of coupler.

# 2023 SPORTSMEN SE

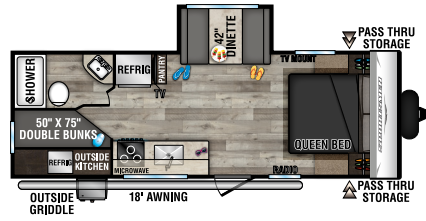
## TRAVEL TRAILERS



**NEW**

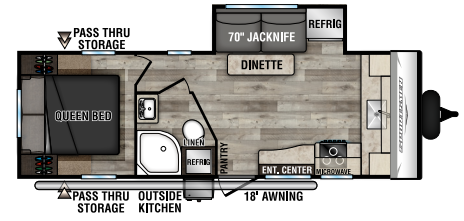
**221RESE**

UVW - 5,310 | Exterior Length - 27' 2" | Sleeps - 6



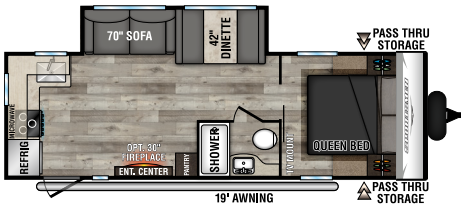
**231BHKSE**

UVW - 4,860 | Exterior Length - 26' 5" | Sleeps - 6



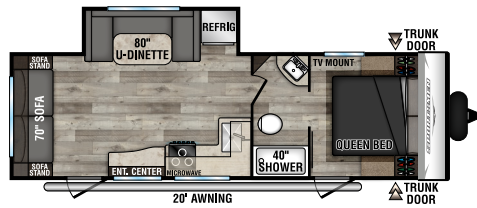
**231FKKSE**

UVW - 5,300 | Exterior Length - 27' 5" | Sleeps - 4



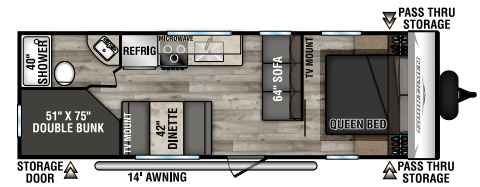
**241RKSE**

UVW - 5,500 | Exterior Length - 28' 2" | Sleeps - 5



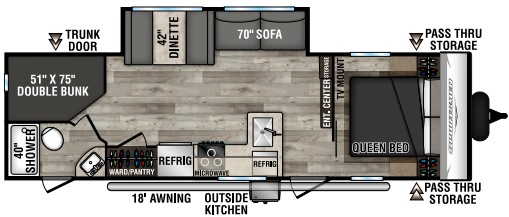
**251RSSE**

UVW - 5,420 | Exterior Length - 29' 7" | Sleeps - 6



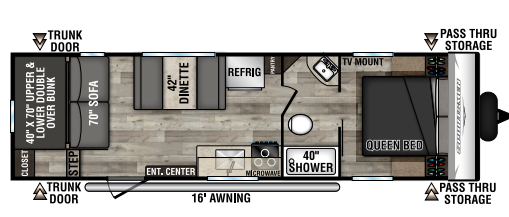
**260BHSE**

UVW - 4,700 | Exterior Length - 28' 7" | Sleeps - 9



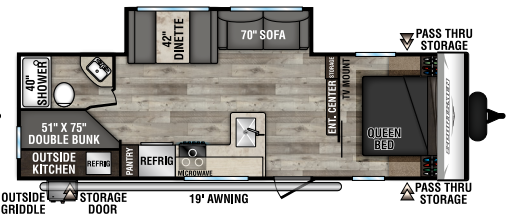
**261BHKSE**

UVW - 5,900 | Exterior Length - 31' 7" | Sleeps - 9



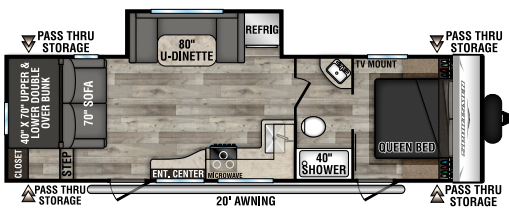
**270BHSE**

UVW - 4,990 | Exterior Length - 31' 5" | Sleeps - 6

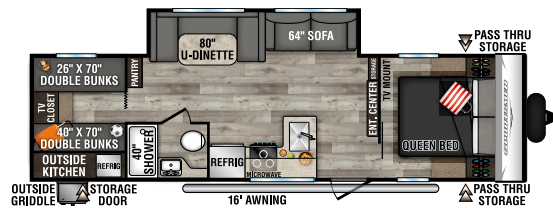


**271BHKSE**

UVW - 5,710 | Exterior Length - 30' 11" | Sleeps - 9



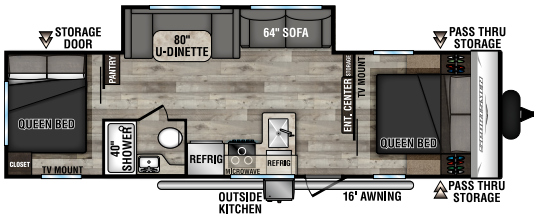
**281BHSE** UVW - 5,980 | Exterior Length - 32' 7" | Sleeps - 9



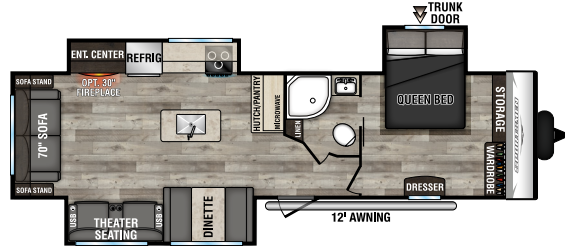
**301BHKSE** UVW - 6,200 | Exterior Length - 32' 10" | Sleeps - 10

# 2023 SPORTSMEN SE

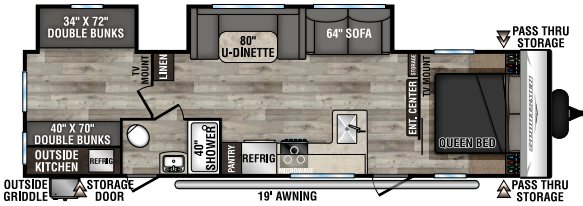
## TRAVEL TRAILERS



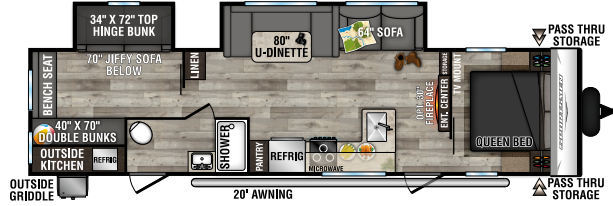
**301DBSE** UWW - 6,150 | Exterior Length - 32'10" | Sleeps - 8



**303QBSE** UWW - 7,550 | Exterior Length - 34'7" | Sleeps - 5

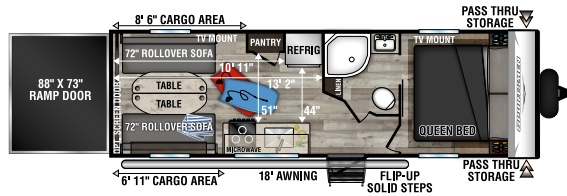


**312BHKSE** UWW - 7,110 | Exterior Length - 35'9" | Sleeps - 10

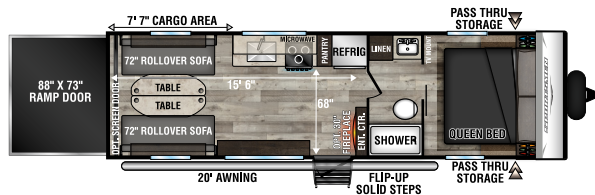


**332BHKSE** UWW - 7,390 | Exterior Length - 37'3" | Sleeps - 10

## TOY HAULERS



**250THSE - TOY HAULER**  
UWW - 5,300 | Exterior Length - 29'1" | Sleeps - 6



**270THSE - TOY HAULER**  
UWW - 5,400 | Exterior Length - 30'10" | Sleeps - 6

# 2023 SPORTSMEN SE

## STANDARDS

- KZ Exclusive Tough Shield Exterior Metal
- 1-Piece, Seamless, Walk-on, Tufflex Roofing Material w/Lifetime Warranty
- 3/8" Fully Walk-On Roof Decking
- Radius Truss Roof Rafters
- Awning w/Drip Rail & Spouts
- Radius Entry Door
- Extra-Large Radius Baggage Doors
- Tinted Windows
- Diamond Plate Rock Guard
- Rear Bumper w/Sewer Hose Storage
- (2) 20# LP Bottles
- 30 AMP Service
- Cable Hookup
- Power Vent in Bath
- Shower Surround
- Reversible Quilted Comforter
- Digital TV Antenna w/Booster
- 13,500 BTU A/C
- Water Heater Bypass Kit
- Large Overhead Cabinets
- Roller Ball Bearing Drawer Glides
- LED Interior Lighting
- Linoleum Throughout
- Monitor Panel
- 3-Burner Cooktop
- Range Hood w/12V Light & Exhaust Fan
- Microwave w/Turntable

NOTE: Options and packages can be found on the website

### CLIMATE PACKAGE



**CLIMATE PACKAGE** adds insulation so you can extend the camping season, with a fully enclosed, insulated, and heated underbelly to protect tanks and pipes (R-9\* sidewalls, R-20\* roof, and R-24\* floor).

\*Calculated R-Value



**TUFFLEX ROOFING**  
by Dacor Products **LIFETIME WARRANTY!**

### RV AIRFLOW SYSTEMS™

**RV AIRFLOW SYSTEMS** provides faster and up to 40% more efficient cooling. Air is consistently distributed throughout the RV.



**BACKUP CAMERA PREP** is standard.



**OUTSIDE SHOWER** with hot and cold faucets.



Experience more freedom and adventure with our optional solar package. Get the convenience of powering your electronics any time, anywhere. **OPTIONAL "OFF THE GRID" SOLAR PACKAGE** includes (1) 110W flexible solar panel, 30A MPPT solar charge controller and pure sine wave inverter. (Powers all GFIs & 110V outlet next to bed & outside refrigerator.)



You'll appreciate the huge **PASS-THRU STORAGE AREAS** offered on most SEs.

Dealer:



985 N 900 W SHIPSEWANA, IN 46565

E: KZ@KZ-RV.COM

WWW.KZ-RV.COM

Due to continual research and advances, manufacturer reserves the right to change specifications, design, price, and equipment without notice, and assumes no responsibility for any error in this literature. Some items shown are not included as standard or optional equipment.

©2022KZ | 00/00/22 | 00M