

# DURANGO

## HALF-TON

Lightweight Luxury Fifth Wheels

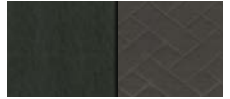


**2019  
Décor**

Cascade



Slate



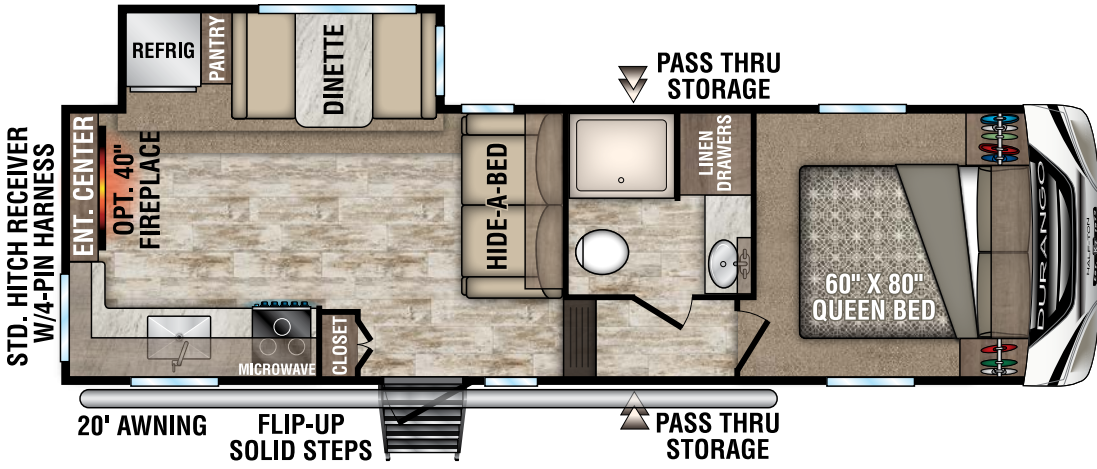
Fifth Wheels	D250RES	D256RKT	D259RLS	D271RLD	D283RLT	D286BHD	D291BHT
UVW (Unloaded Vehicle Weight)*	7,260	9,170	7,150	8,520	8,750	8,800	9,670
Dry Hitch Weight*	1,380	1,320	1,010	1,120	1,230	1,800	1,410
Dry Axle Weight*	5,880	7,850	6,140	7,400	7,520	7,000	8,260
NCC (Net Carrying Capacity)	1,740	1,330	1,850	1,980	1,750	1,700	1,830
GVWR	9,000	10,500	9,000	10,500	10,500	10,500	11,500
Exterior Height w/ A/C	12' 1"	12' 1"	12' 1"	12' 1"	12' 1"	12' 0"	12' 1"
Exterior Width	96"	96"	96"	96"	96"	96"	96"
Exterior Length**	28' 11"	33' 2"	29' 5"	33' 10"	33' 10"	33' 7"	37' 4"
Refrigerator (cu. feet)	8	8	8	8	8	8	8
Water Heater Cap. (gal. G/E w/DSI)	6	6	6	6	6	6	6
Fresh Water Cap. (gal.) [Including Water Heater Capacity]	61	61	61	61	61	61	61
Waste Water Cap. (gal.)	53	53	53	53	53	53	53
Gray Water Cap. (gal.)	93	93	53	53	53	93	53
1/2 Bath Cap. (gal.)	0	0	0	0	0	0	53
LP Gas Cap. (lbs.)	60	60	60	60	60	60	60
Furnace BTUs (1,000s)	35	35	35	35	35	35	35
Tire Size	16"	16"	16"	16"	16"	16"	16"
Awning	20'	14'	18'	14'/11' opt.	14'/11' opt.	(2) 14'	13'/11' opt.

\*This weight reflects the rolling average unit weight for each model. Your trailer weight will vary according to optional equipment.

\*\*Exterior length is measured from center of hitch pin to rear wall.

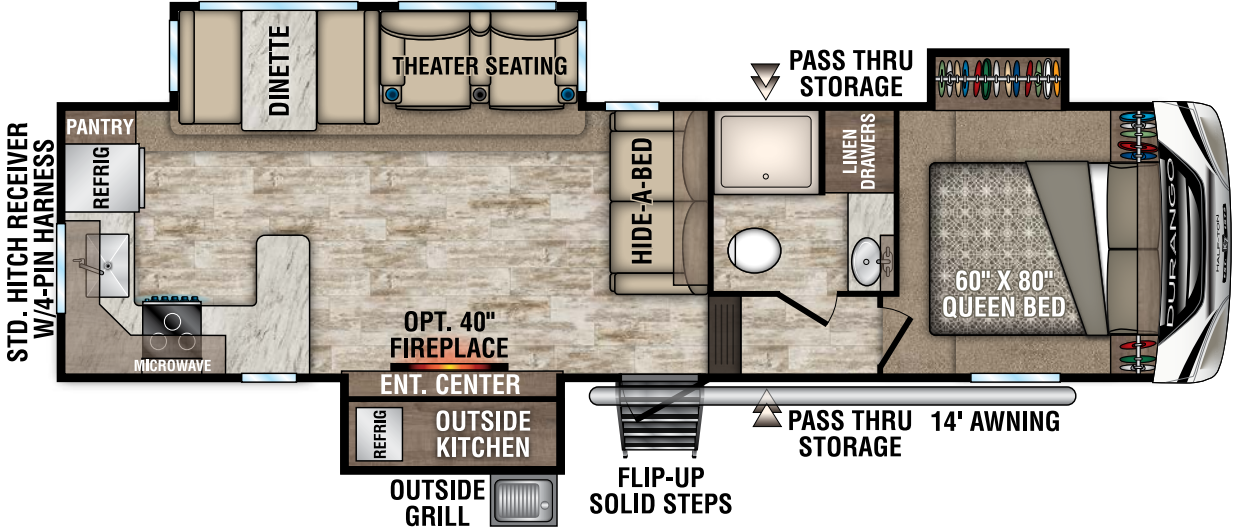
**D250RES**

**NEW**



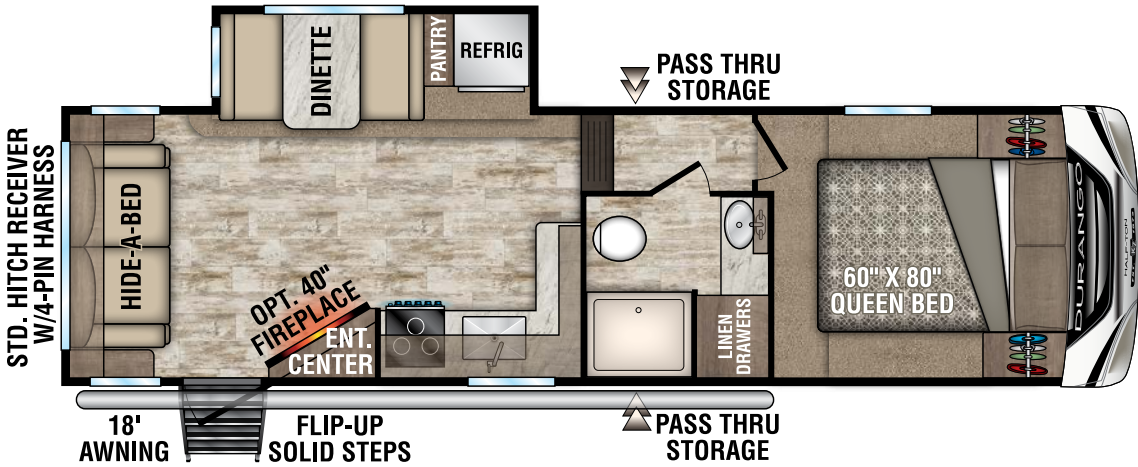
**D256RKT**

**NEW**



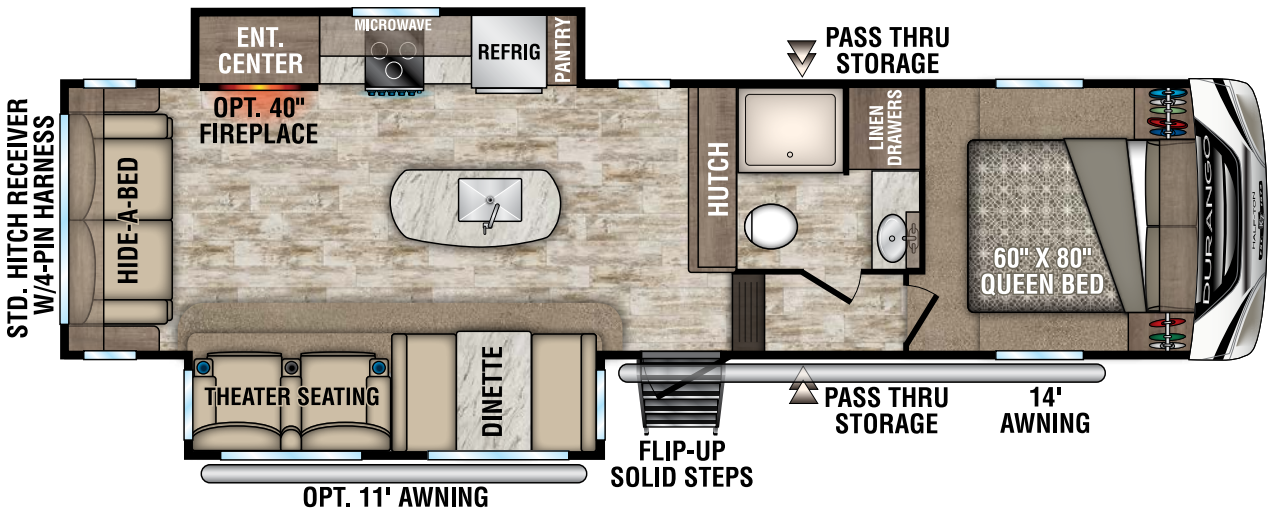
**D259RLS**

**NEW**



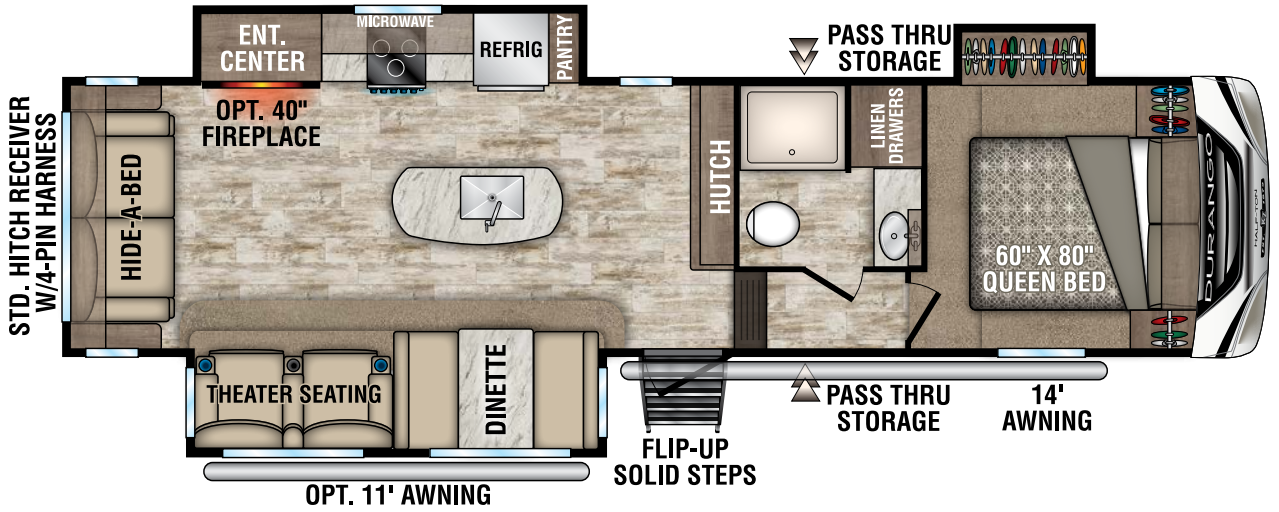
**D271RLD**

**NEW**



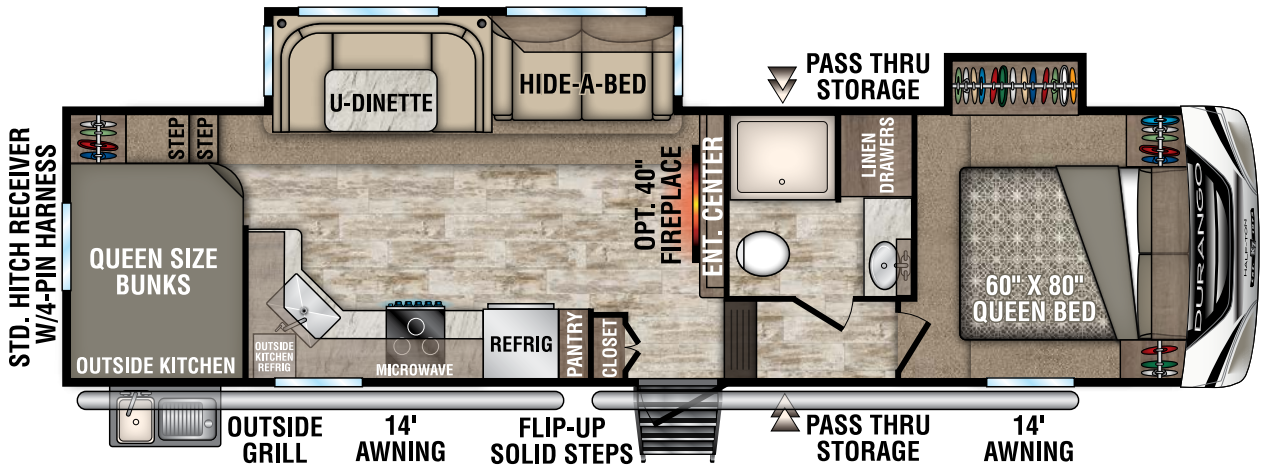
**D283RLT**

**NEW**



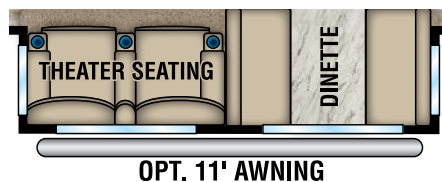
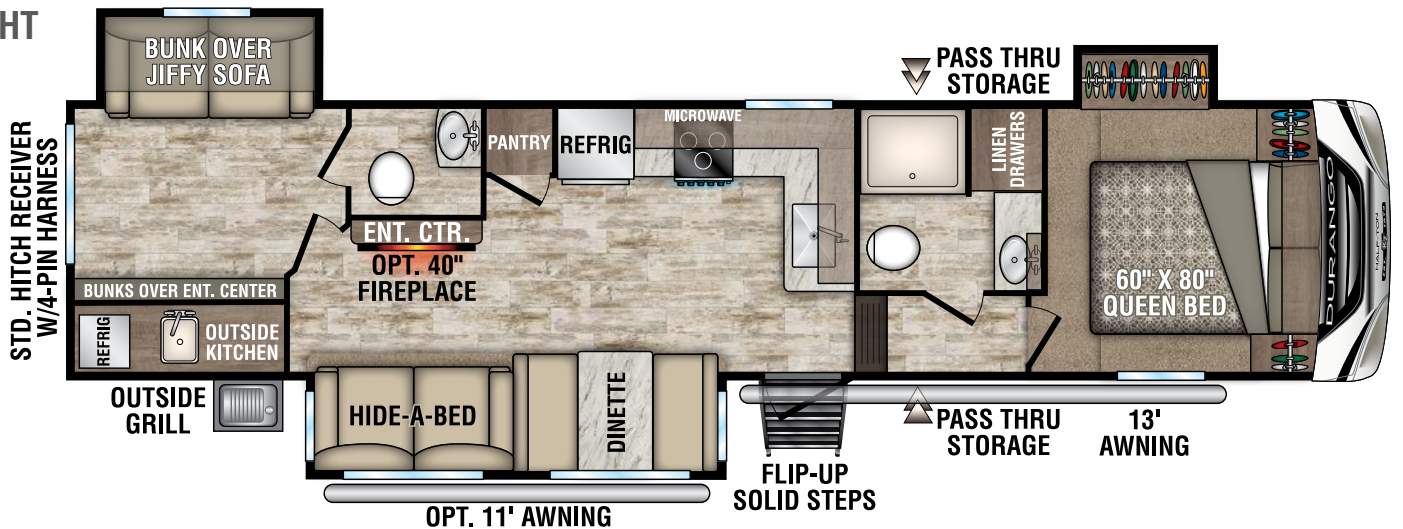
**D286BHD**

**NEW**



**D291BHT**

**NEW**



D291BHT Slideout Option

## CONSTRUCTION FEATURES

- 5-Sided 100% Aluminum Frame
- Steel Powder Coated Frame
- R-11 2" Block Foam Bonded Sidewalls w/ EGS Metal Backing Strips (to support all int. cabinets)
- Lamilux® Gelcoat Fiberglass
- One-Piece ABS Slideroom Bottoms; Slideroom Floors Insulated
- Walk-On TPO Roof Membrane
- Pex® In-Floor Heated Waterlines & Kitchen Gray Pipes (all waterlines & drainlines are located above all insulation)
- Reinforced Heavy-Duty Fiberglass Front Cap (w/maximum turning radius on short bed trucks)
- 6' 2" Tall Main Floor Sliderooms

## EXTERIOR FEATURES

- Dexter® Axles w/Self Adjusting Brakes & Height Adjusting Hangers
- 6-Lug Heavy-Duty Aluminum Rims w/16" Nitro Filled Tires
- 100% Exterior LED Running Lights & Taillights
- LED Front Docking Light & Sewer Hookup Light
- Electric Awning w/LED Lights
- Electric Front Jacks
- 3" x 14" Foam-Core In-Floor Straight-Line Heating System w/35,000 BTU Furnace
- Heated Water Convenience Center (incl. black tank flush, power fresh tank water fill, winterizing system, outside shower)
- Fully-Finished, Heated & Sealed Basement Storage Compartment
- Heated & Enclosed Dump Valves
- Gas/Electric/DSI Water Heater
- Swing-Away Assist Grab Handle
- Dual Lock Basement Storage Slam Latches
- Satellite Pre-Wire (roof & ground)
- Outside Speakers & Pre-Wire for Exterior TV
- Full-Perimeter Rain Gutter System (incl. rear & additional gutters over sliderooms)
- LP Quick Connect
- Under Mount Spare Tire
- 30 AMP Electrical Service

## LIVING ROOM/KITCHEN FEATURES

- Pullout Sprayer Faucet
- Storage Shelf under Kitchen Sink
- Heavy-Duty 100 LB Drawer Glides on Every Drawer
- Baltic Birch Drawer Boxes
- Microwave
- Kitchen Window (most models)
- All-Wood Lumber Core Screwed Cabinets w/Hardwood Doors
- 5" Stainless Steel Cabinet Hardware
- 3/8" Re-Bond Carpet Pad w/22 OZ Residential Carpet
- XL Toggle Light Switches
- All LED Ceiling & Cabinet Lights w/ Multiple On/Off Switches
- All Kitchen OH Cabinets have Shelf & Extra-Tall Slide Lips

## BATHROOM/BEDROOM FEATURES

- Shower Skylight
- Porcelain Foot-Flush Toilet
- All LED Lights in Bed & Bath w/Multiple Large Switches
- 12V Vent Fans in all Baths
- Bathroom Linen Closet (where available)
- Padded Headboard w/Shelf & Power at the Head of all Beds
- XL Under-Bed Storage
- Bedroom TV Pre-Wire

## OPTIONS (EXTERIOR)

- 50 AMP Service w/2nd A/C Prep
- 2nd A/C Ducted (13,500 BTU)
- Dual Pane Windows (frameless)
- Electric Rear Stabilizer Jacks
- 4 Point Auto Electric Leveling
- Wireless Backup Camera System - Observation
- "Off the Grid" Solar Package
- Turning Point Hitch Pin
- 2nd LED Lighted Power Awning (D271RLD, D283RLT, D291BHT)
- Generator Prep
- 5.5KW LP Onan Generator (req prep & 50 AMP)

## OPTIONS (INTERIOR)

- 40" Wideview Fireplace (requires 50 AMP on 256RKT, 271RLD, 283RLT)

- Bedroom LED TV w/Inside/Outside Bracket
- F/S Dinette Table & 4 Chairs IPO Dinette
- Theater Seating w/Heat & Massage Features IPO Tri-Fold HAB (250RES, 259RLS, 286BHD, 291BHT)
- Theater Seating w/Heat & Massage Features (required on 256RKT, 271RLD, 283RLT)
- 10 CU FT Refrigerator 12V IPO 8 CU FT Gas/Electric Refrigerator
- Power Vent Fan in Main Area or Bathroom
- Central Vac System (N/A on 250RES)

## KZ ADVANTAGE PACKAGE (MANDATORY OPTION)

### EXTERIOR

- Polar White Gelcoat Exterior Fiberglass
- Partial Painted Fiberglass Front Cap
- 5-Sided Aluminum Framing
- Flip-Up Entry Steps (main entry)
- 15K Ducted A/C
- 5/8" T&G Plywood Floor Decking
- Key-Alike for Baggage & Entry Doors
- Friction Hinge Entry Door
- Screenshot Feature on Entry Door
- Large Folding Grab Handle
- Power Front Jacks
- Undermount Spare Tire
- Equa-Flex® Rubberized Suspension
- Nitrogen Filled Tires
- Battery Disconnect
- Black Tank Flush
- Backup Camera Prep
- Roof Mounted Solar Prep
- Climate Package (heated, insulated & enclosed underbelly)
- 2" Towing Receiver Hitch w/4 Pin Wire Harness Connection (3,000 lb tow rating & 300 lb hitch rating)
- Roof Ladder
- Fully Vented Attic System w/2 Attic Vents

### INTERIOR

- Maple Glazed Cabinetry
- Glazed Solid Hardwood Slideout Fascia
- Seamless Countertops w/Deep Undermount Stainless Steel Kitchen Sink w/Sink Cover

- Drop-In Cooktop w/Glass Cover & Oven
- Kitchen Skylight
- 36" Pullout Storage Bins in Booth Dinette
- Tri-Fold HAB Sofa
- 2 Motion Sensor Lights
- LED TV
- Multiple Media Stereo w/DVD/Bluetooth/NFC Wireless Connectivity
- 12V Dual USB Charging Station
- Pleated Shades
- Porcelain Foot Flush Toilet
- Stainless Steel Oval Bathroom Sink
- Large 30" x 36" Shower & Surround
- Plywood Bed Base
- Upgraded Queen Black Label Pillowtop Mattress 60" x 80"

## KZ CONVENIENCE PACKAGE (MANDATORY OPTION)

### EXTERIOR

- Power Awning w/LED Light Strip
- 16" Tires w/Aluminum Wheels
- Magnetic Catches for Baggage Doors
- Directional HDTV Antenna
- LED Lights in Exterior Speakers

### INTERIOR

- Residential Grade Linoleum
- 8 CU FT Gas/Electric Refrigerator w/ Temperature Controls
- Stainless Steel Residential Kitchen Faucet w/Pulldown Sprayer
- Surfex Wood Step in FW Hallway
- Interior Control Switches on Overhead End Cabinet
- Dark Accent Trim on Corners/Entry Doors
- Electric Outlet in Bunk Area

## BONUS FEATURES

- 2-Year Limited Warranty (see flyer)
- KZ has received the Dealer Satisfaction Index Award for 18 years
- KZ's 47 years of stable, dedicated manufacturing experience, coupled with its predominant Amish workforce, heritage and commitment to superb quality, allow us to produce the lowest-priced luxury fifth wheel available.



985 N 900 W • Shipshewana, IN 46565  
E-mail [kz@kz-rv.com](mailto:kz@kz-rv.com) • [www.kz-rv.com](http://www.kz-rv.com)

*Due to continual research and advances, manufacturer reserves the right to change specifications, design, price and equipment without notice, and assumes no responsibility for any error in this literature. Some items shown are not included as standard or optional equipment. ©2018KZ | 12/10/18 | 25M*